



Coastal Forest Conservation Initiative

Project Type: Protection and Restoration of
Critical Forested Habitats

State CIAP Funds: \$16.2 million

The Coastal Impact Assistance Program (CIAP) was established by the Energy Policy Act of 2005 to assist states and their coastal political subdivisions in mitigating the impacts from Outer Continental Shelf oil and gas production. Approximately \$16M of the CIAP funds allocated to the state of Louisiana are being used to develop and implement a Coastal Forest Conservation Initiative (CFCI) to conserve critical coastal forest habitat for storm damage reduction and the protection and restoration of rare, declining, or ecologically significant habitats.



The CFCI is a completely voluntary program; its primary focus is to acquire land rights (fee title or conservation servitude) from willing landowners to address threats of conversion and/or opportunities to restore or enhance sustainability of coastal forest tracts that provide significant ecological value and/or serve storm damage reduction functions. The initiative may also include implementation of small-scale projects to restore and enhance forest sustainability.

Applications and other program information is available at:
<http://www.lacpra.org/cfci>

CFCI will accept applications for 90 days. The application period will begin on May 1, 2010 and all applications must be received by July 31, 2010.

For questions regarding completion of applications, please contact:

Leonard McCauley, GEC, Inc.
(225) 612-4147
cfci@lacpra.org

For other questions regarding the CFCI program, please contact:

Laura Belden, Project Manager
(225) 342-4592
laura.belden@la.gov



Purpose:

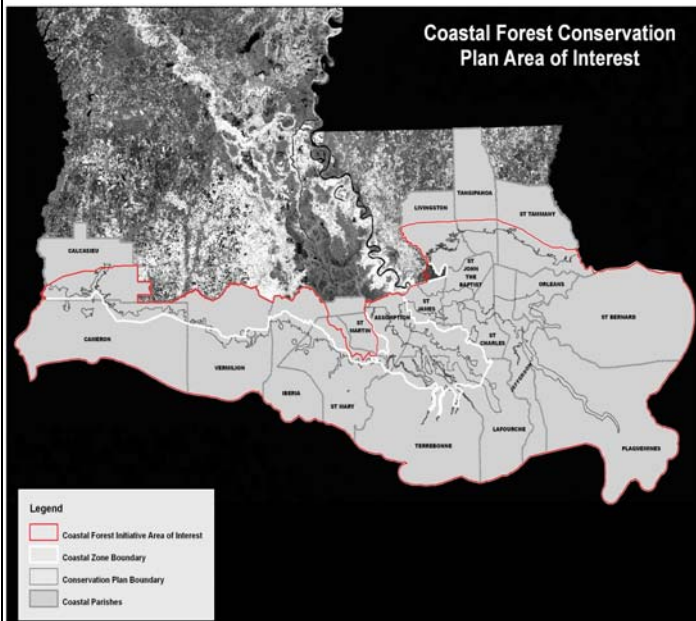
The primary focus of the CFCI is to protect forested areas which provide critical functions. Forested areas will be selected from applications meeting one or more of the following objectives:

- Direct storm damage reduction potential or protection of hurricane/storm protection features and measures;
- Areas of high ecological significance; or
- Tracts that are in danger of conversion to open water, other non-forested uses, or to human development.

Approach:

The goal of the CFCI is to conserve and protect coastal forest resources in Louisiana which provide a significant benefit to the citizens of Louisiana from multiple perspectives. The primary strategy of the CFCI is to acquire land rights (fee title or conservation servitude) from willing landowners to address demonstrated threats of conversion and/or opportunities for restoration or enhanced sustainability of coastal forest tracts that provide significant ecological value and storm damage reduction. The initiative also may include implementation of small-scale projects to reforest disturbed sites and to restore and enhance forest sustainability, such as those projects which reduce excessive ponding or impoundment and/or help offset subsidence.

CFCI Area of Interest:



Red line indicates CFCI area of interest.

Minimum Program Standards:

Willing Landowner Standard

The CFCI is a voluntary conservation program; in all instances in which an application is submitted for a candidate project in the CFCI program, written expression of interest in program participation should be specified by the landowner. Failure to do so would result in the removal of the candidate project from consideration for the program.

Proof of Ownership Standard

Demonstration of proof of ownership is essential for a candidate tract to be considered for CFCI selection. Along with the demonstration of proof of ownership for a candidate tract, a description of any outstanding rights and/or encumbrances for the tract should also be provided.

Consistency with CFCI Conservation Objectives

All projects acquired by the CFCI program should support the achievement of the program goal via meeting one or more of the following program objectives:

- *Direct storm damage reduction potential*- Tract must be demonstrated to have a strategic geographic location supporting its function as a buffer to populated places or significant infrastructure from damages resulting from the inshore movement of coastal storms, precipitation, or other flooding events;
- *Ecological significance*- Tract must be demonstrated to contain natural resources that are of high ecological significance or are at a location that provides significant ecological services and are consistent with the State's Wildlife Action Plan; and/or
- *Imminent threat of conversion*- Tract must be demonstrated to be in imminent danger of conversion to non-forested use as a result of land use practices within or in the immediate vicinity of the candidate.

Native Forest Cover Standard

The primary focus of the CFCI is the conservation of existing stands of coastal forest habitats. Consequently, candidate tracts should be demonstrated to contain native forest on at least 75 percent of the total area to be enrolled in this program.

Minimum Size or Contiguity Standard

A general minimum size of 20 acres has been established as a minimum program standard. This general minimum size is deemed to constitute a minimum tract size necessary for common coastal forests to provide benefits which meet the conservation objectives of the CFCI program. Exceptions may be made for unique or rare habitat or if the tract is contiguous with other coastal forest or protected lands.

Lack of Duplicative Conservation Servitudes

Tracts of coastal forest that have existing conservation servitudes that are duplicative with the CFCI conservation objectives will be removed from consideration for selection because the conservation and sustainability of these tracts would already be ensured by those existing measures.